



# Grove Kindergarten

## Environmental Sustainability Policy

Date created  
November 2020

Next Review  
August 2027

### Purpose

Grove Kindergarten is committed to protecting its natural environment to ensure a sustainable future for our children.

The purpose of this policy is to support Grove Kindergarten to take an active role in caring for the environment and promoting and contributing to a sustainable future.

### Definitions

Environmental sustainability: The responsible use and management of the planet's resources to ensure that they remain available and uncompromised for future generations to use and enjoy.

### Aim

Grove Kindergarten is committed to:

- Promoting respect for, and enjoyment of, the natural beauty of all living things and environments.
- Foster the capacity of individual children to understand the interdependence between themselves, other people, plants, animals, and the land.
- Support and encourage kindergarten staff and children to incorporate sustainable practices into their daily routines and interactions.
- Encourage the development of positive attitudes and values in line with sustainable practices.
- Ensure compliance with regulation 113 of the Education and Care Services National Regulation (2018) and elements 3.2.1 (Inclusive Environment) and 3.2.3 (Environmentally Responsible) of the National Quality Standards (2018).

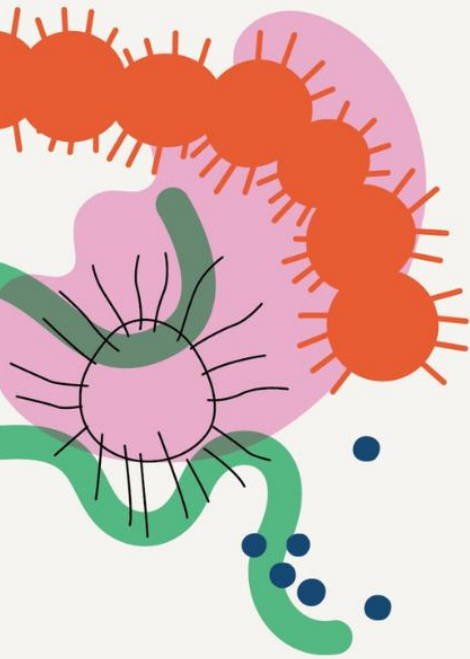


12 Main Street  
Eastwood SA 5063

08 8271 5371  
0417 092 487

Victoria.Willcox828@schools.sa.edu.au  
info.grovekindy436@schools.sa.edu.au

[grovekgn.sa.edu.au](http://grovekgn.sa.edu.au)



## Practices

Environmental sustainability takes into consideration: waste reduction, minimizing consumption, conserving energy, reducing water waste, and protecting and conserving wildlife and natural habitats.

Grove Kindergarten will achieve this through:

- Identifying environmentally sustainable strategies.
- Seek and apply for grants, where practicable, to support and implement environmental sustainability strategies.
- Incorporate environmental education and sustainable practice into curriculum.
- Engage in activities that support the kindergarten to become more environmentally sustainable (e.g., recycling).

**This policy has been established after consultation with staff and parents within the preschool community.**

---

## Document Review History

Date	Approved by Governing Council
November 2020	Policy created from pre-existing NRM policies
August 2023	Rewrite and consultation
August 2024	Reviewed with staff and Governing Council endorsed



12 Main Street  
Eastwood SA 5063

08 8271 5371  
0417 092 487

Victoria.Willcox828@schools.sa.edu.au  
info.grovekindy436@schools.sa.edu.au

[grovekgn.sa.edu.au](http://grovekgn.sa.edu.au)